

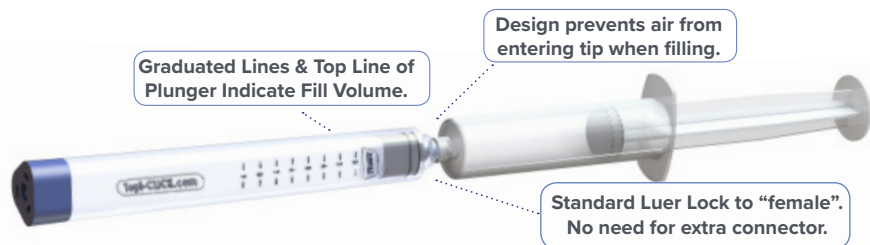
# TOPI-CLICK<sup>®</sup>

Topical Dosing Applicators

by DOSELOGIX

## TOPI-CLICK<sup>®</sup> MICRO<sup>®</sup>

Micro Quick-Fill Technology<sup>™</sup>  
Makes Filling Fast & Simple



**Note: Graduated Lines** are for filling only and not for patients. **Top** black line of the plunger indicates **Fill Volume**. The embossed **Refill Badge** helps patients reorder medication in a timely manner.



**Step 1: Filling**  
**Syringe Tip-to-Tip Filling-**  
Screw Luer syringe to the Luer lock tip of the Micro<sup>®</sup>. **Requires no extra Luer Lock adaptor.**



**EMP Jar Quick-fill Adaptor<sup>™</sup> Filling-** Screw on **Topi-CLICK Micro<sup>®</sup> EMP Jar Quick-fill Adaptor<sup>™</sup>**. Fill topical medications directly from mixing jar with this added Micro<sup>®</sup> accessory.

Select one of 3 applicators



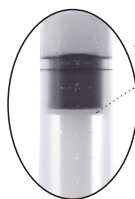
**Step 2: Applicator Tip Attachment -**  
Select Applicator Tip and press on by pushing straight down (important) against a hard surface.



**Note: Soft Angled Applicator<sup>™</sup>** placement requires tip to be aligned where lower slant of tip is on the same side as **Refill Badge of the Micro<sup>®</sup> tube.**



**Step 3: Priming the Micro<sup>®</sup>** Advance the actuator to engage plunger by manually turning/CLICKing base. The Actuator Bar should seat completely to the plunger before priming. **Actuator can also be advanced by using a mini cordless screwdriver to speed up the process (200 RPM Max). A Micro Driver Socket Bit<sup>™</sup> can be purchased for faster actuator advancement with a cordless mini screwdriver.** (See Advancing Actuator Instructions.)

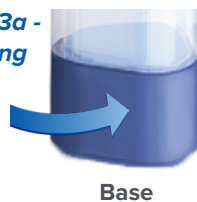


**Step 4: Cap Placement**  
Screw on cap securely to protect tip and prevent evaporation.



**Step 5: Label Application**  
Apply above the base opposite the "REFILL Badge" indicator.

**Step 3a - Priming**



Base

**Step 3a: Priming**  
Prime the Micro<sup>®</sup> by turning/CLICKing the base until contents are dispensed, then wipe off. Be sure to align Micro<sup>®</sup> base with the triad tube.  
**Approximate Priming: 0.15 mL or 3 CLICKS.**

**Dispense/CLICK: 0.05 mL**      **Approx. Residual: 0.15 mL**  
**Dispenser Volume: Up to 9.75 mL**      **Approx. Priming: 0.15 mL or 3 CLICKS**  
**Total Delivery Volume: Up to 9.45 mL**

The Best User Experience<sup>™</sup>